



**DAVIS SANDERS
HOMES**

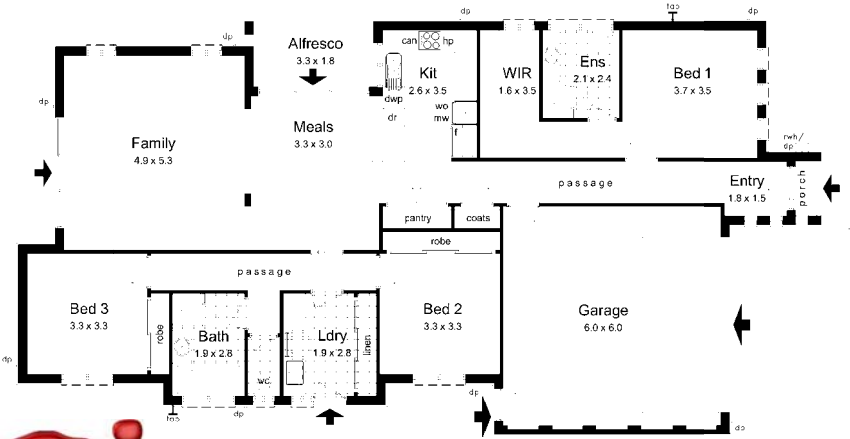
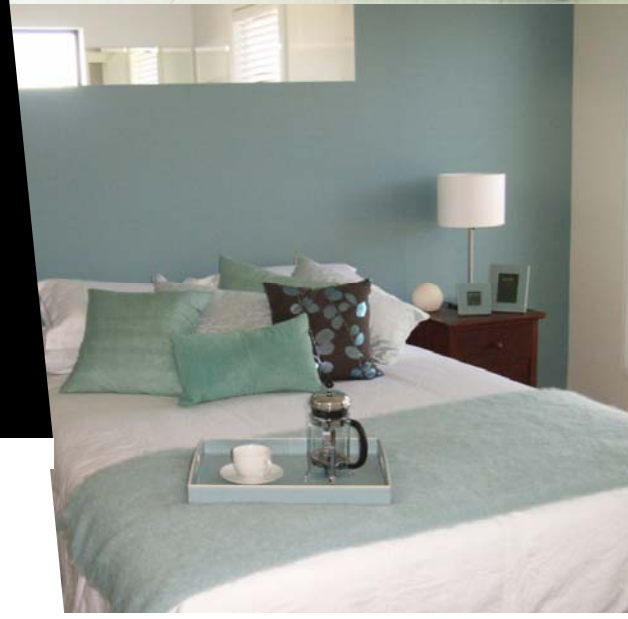
The Calipso, Lot 231

Offering open plan living and privacy, The Calipso ticks all the boxes. Everything you require for family living and entertaining has been thought about when planning this home.

Clean lines and simple spaces work well together creating the perfect family home.

This complete home and land package is great value from \$350,729

The Calipso is available as a House and Land package on lot 231



House & Land
exceptional
value from
\$350,729

| The Calipso | Home Area | Squares | Dimensions |
|-----------------------------------|--|---|---|
| 3 2 2 | Living: 158.0m ² Garage: 39.1m ² Total Area: 204.6m ² | 17.0 squares 4.2 squares 22.0 squares | House width: 11300mm House length: 21300mm |

CONTACT: MITCH KENNEDY 0438 386 943